

DOCAVE POLICY ENFORCER

FOR MICROSOFT® SHAREPOINT® MONITORING & POLICY ENFORCEMENT

Our Innovation. Your Rules. Complete Control.

KEY BENEFITS



REAL-TIME
MONITORING

Ensure all events in your SharePoint environment remain within policy and under control by monitoring them around the clock and automatically adjusting settings and configurations across existing environments, whether hosted on-premises or on Office 365.



GOVERNANCE
AND GUIDANCE

Control configurations, security, and management with 36 configurable rules developed based on our experience enabling collaboration for more than 13,000 customers worldwide.



ENTERPRISE
POLICY
IMPLEMENTATION

Tailor to your evolving information architecture by configuring your own rules and integrating more than 40 different event triggers using our Rules Software Development Kit (SDK).

NO GIMMICKS. JUST GOVERNANCE.

DocAve Policy Enforcer helps organizations rapidly respond to unauthorized modifications in configurations, security, and management. By continuously monitoring and taking action on your SharePoint environments, whether hosted on-premises or on Office 365, Policy Enforcer ensures that all actions and changes to your SharePoint environments fall within your organization's defined governance policies. Policy Enforcer empowers organizations with complete control and unmatched governance enforcement.

Microsoft Partner

Gold Application Development
Gold Collaboration and Content

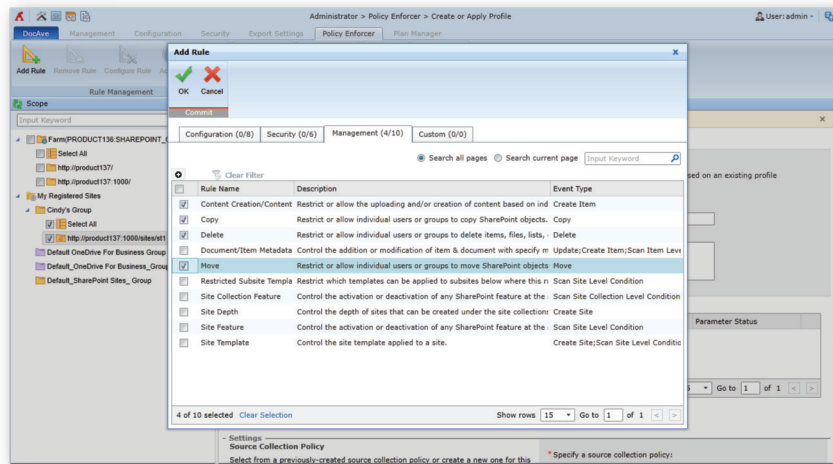
FREE
30-DAY TRIAL

www.AvePoint.com

POLICY ENFORCER RULE LIBRARIES:

CONFIGURATIONS:

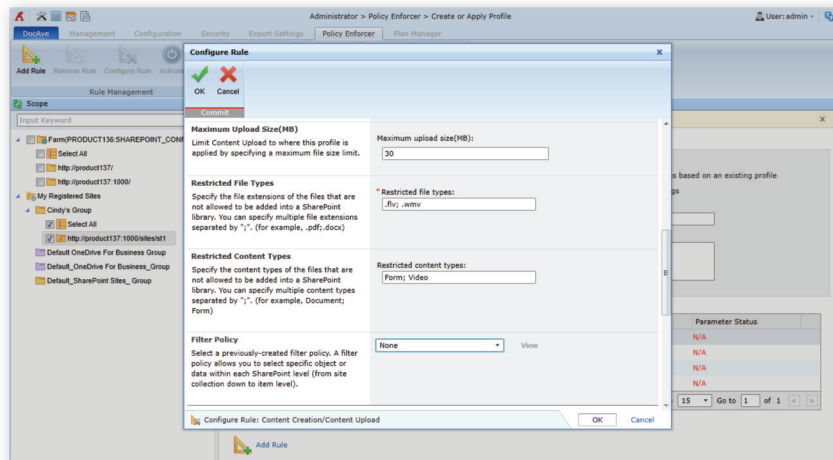
- **Information Rights Management (IRM):** control IRM settings on lists and libraries
- **Master Page:** control the master page settings for sites
- **Property Bag:** control the presence and integrity of values held within sites property bag
- **Recycle Bin:** control the Recycle Bin settings for a site collection
- **Site Collection Lock:** control the site lock settings
- **Site Collection Navigation:** control the navigation settings of a site collection and site
- **Site Theme:** control the site theme applied to a site
- **List/Library Versioning Settings:** control the list and library versioning settings within a site
- **Search and Offline Availability:** control the site search visibility settings where this rule is applied



Add Rules

SECURITY:

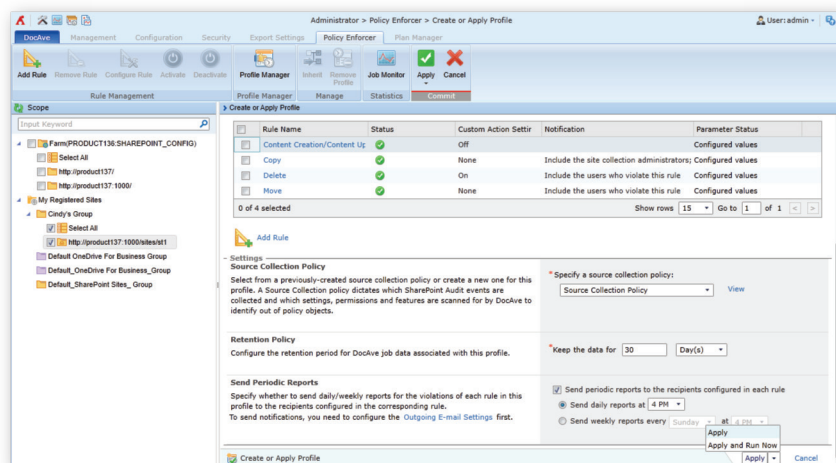
- **Active Directory Group Depth:** control the nesting (depth) of Active Directory groups which are added to SharePoint as SharePoint users
- **Break Inheritance Protection:** prevent or allow ability to break inheritance permissions at all object levels
- **Grant, Revoke, and/or Modify Permissions Privilege:** prevent or allow individual users to grant or revoke permissions for other users or groups
- **Microfeed Permissions Enforcement:** lock and protect the Microfeed Lists' unique permissions from modification
- **Permission Modification Protection:** specify SharePoint users/groups whose permissions are locked and protected from modification
- **Site Collection Administrators Count:** enforce the number of site collection administrators in each site collection where this rule is applied
- **Site Collection Administrators Restriction:** control the addition of users/groups into the site collection Administrators groups of the site collections where this rule is applied
- **User/Group Restriction:** control the addition of users/groups into SharePoint sites where this rule is applied



Configure Rules

MANAGEMENT:

- **Farm Feature:** control the activation or deactivation of any SharePoint feature at the farm level
- **Web Application Feature:** control the activation or deactivation of any SharePoint feature at the web-app level
- **Site Collection Feature:** control the activation or deactivation of any SharePoint feature at the site collection level
- **Site Feature:** control the activation or deactivation of any SharePoint feature at the site level
- **Site Creation:** restrict or allow individual users or groups to create a site within SharePoint
- **Site Depth:** restrict or allow the creation of sites or subsites
- **List or Library Creation:** restrict or allow individual users or groups to create a list or library within SharePoint
- **Content Creation:** restrict or allow the uploading of content based on individual user or group, size of content, content type, or file type
- **Copy:** restrict or allow individual users or groups to copy SharePoint objects including content, permissions, content types, and more
- **Delete:** restrict or allow individual users or groups to delete items, lists, or libraries
- **Move:** restrict or allow individual users or groups to move SharePoint objects including content, permissions, content types, and more
- **Site Column Type Deployment:** control the site column type deployment where this rule is applied
- **List Column Type Deployment:** control the list column type deployment where this rule is applied
- **Site Content Type Deployment:** control the site content type deployment where this rule is applied
- **List Content Type Deployment:** control the list content type deployment where this rule is applied
- **Restricted Subsite Template:** Restrict which templates can be applied to subsites below where this rule is applied
- **Site Template:** control the site template applied to a site
- **Site Size:** control the size of sites where this rule is applied
- **Web Part Mandatory Block:** Restrict which types of Web Parts should be blocked on specified pages where this rule is applied



Apply Rules

For a comprehensive list of new features in this release, please view our [DocAve 6 Service Pack 5 Release Notes](#).

How to Buy DocAve

Call: 201.793.1111
E-mail: Sales@AvePoint.com
Evaluate DocAve for free at:
www.AvePoint.com/download

AvePoint Global Headquarters
3 Second Street
Jersey City, NJ 07311
Phone: 201.793.1111 Fax: 201.217.8709



For US Government Organizations:
DocAve can be purchased directly from
AvePoint or through the GSA website at
www.GSAadvantage.gov.

See why you should choose AvePoint as a strategic SharePoint partner, visit www.avepoint.com/about.

Join the AvePoint community at www.avepoint.com/community.

Accessible content available upon request.